



**ETH** zürich



**eawag**  
aquatic research



# Real-world Lab Jurapark Aargau

Spotlights from  
Real-world Experiments

*Philipp Lischer, Tim Geiges  
at WWF, June 2026*



Photo: Michel Jaussi

## Jurapark Aargau



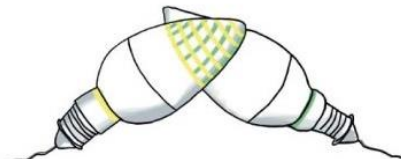
- Regional nature park of national importance
- 299 km<sup>2</sup>
- 31 municipalities (30 AG/ 1 SO)
- 55'000 residents
- «heterogeneous» character of landscape and municipalities



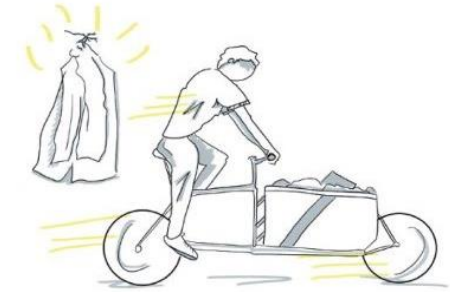
Sustainable  
Development



Research



Transdisciplinary  
and Participatory

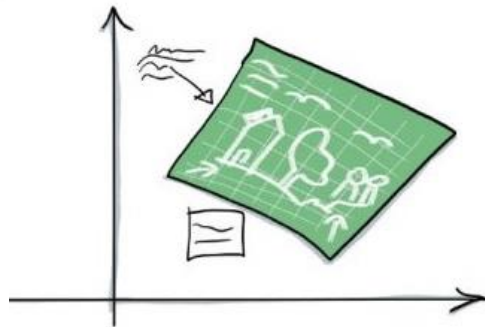


Transformative

# Real-World Lab Attributes



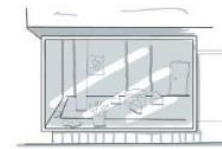
Long-term



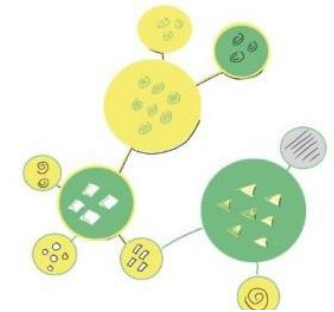
Model Character,  
Transferability



Educational

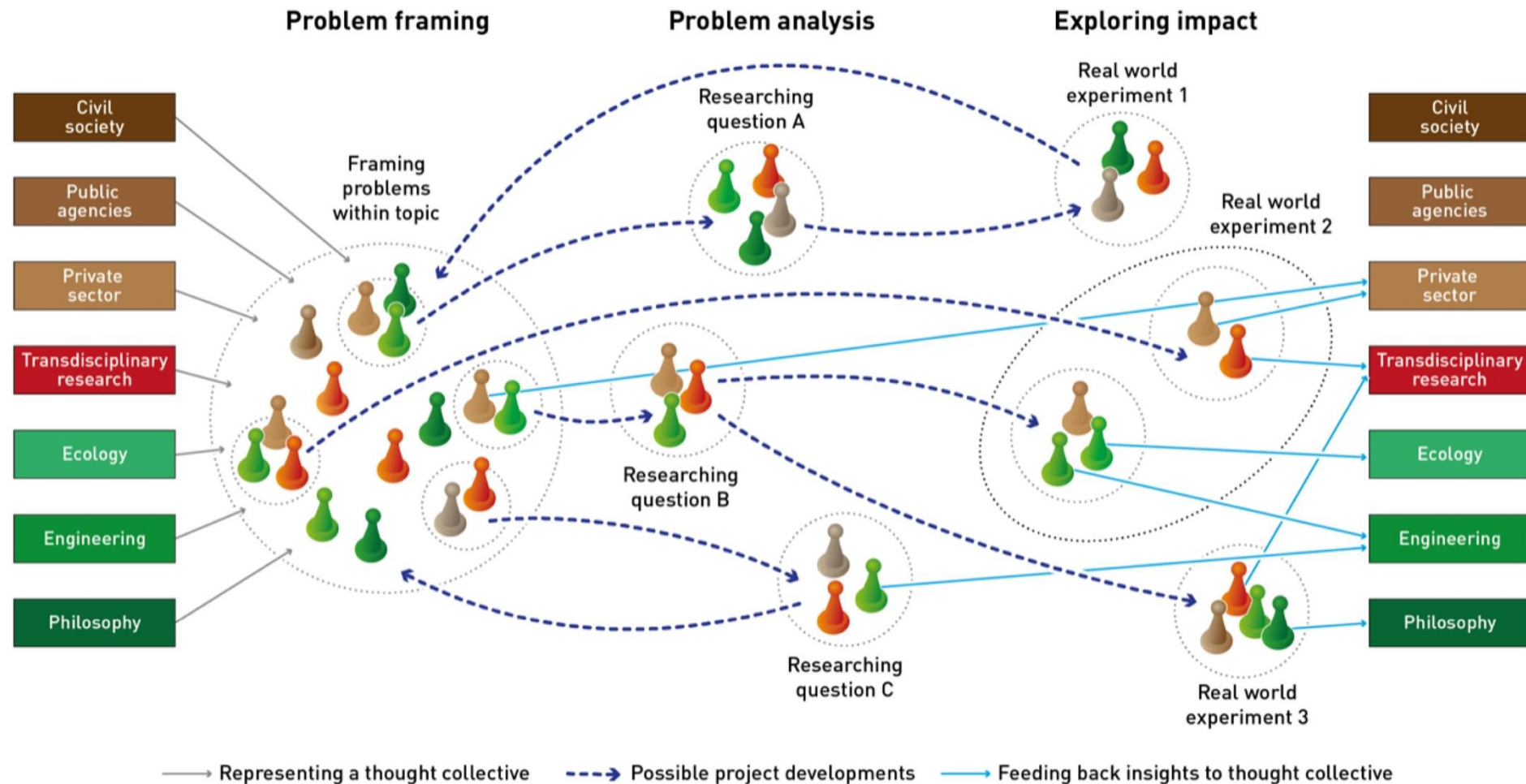


Laboratory Character



Society  
oriented

# Jumping from joint problem framing to exploring impact



Pohl et al., 2021, *Conceptualising transdisciplinary integration as a multidimensional interactive process*.

In a transdisciplinary project, researchers of different disciplines or interdisciplinary fields and practitioners of different sectors of society jointly frame a problem, analyse it, and explore to have impact. Researchers and practitioners may gain insights in all three stages. A project may not go through all three stages and not in a sequential order. A project (larger circle) may also split into sub-projects (smaller circles).

# Four running Real-world experiments



From rain to water as a resource (Keylines)



Assisting farms in navigating climate change



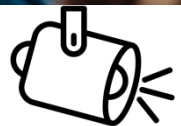
Green spaces of the future that invite to linger



Radical regional wood use



## ***Spotlight 1: Joint Problem Framing!***



***Spotlight 2: Aiming for bidirectional knowledge flow***



## ***Spotlight 3: Teaching with real-world settings as opportunities***



# To sum up...

- Co-production on equal footing, e.g. via Joint Problem Framing
- Aiming for bidirectional knowledge flow between research and practice
- Teaching in real-world settings are opportunities for students to acquire diverse competencies



Spotlight 4: Effective actor engagement requires time and supportive conditions to carefully build up trust for respectful and long-term partnerships and to integrate produced knowledge.





# More about the Real-World Lab Jurapark Aargau:

[www.jurapark-aargau.ch/reallabor](http://www.jurapark-aargau.ch/reallabor)



Other team members:

Christian Pohl, *TdLab ETH Zürich*

Silvia Tobias, *Swiss Federal Institute WSL*

Christine Neff, *Jurapark Aargau*

Isabelle Zutter, *Jurapark Aargau*